
Test Measurement Report

FILIX , Stancija Pataj 52A
52000 Pazin , Croatia
Tel: +385 52 255 333
Email: info@filixlighting.com

Lamp Description:

Test: Filix Zero G

Manufacturer: Filix

Test laboratory: Filix R&D lab

Luminarie category: ZG324HTWGR24

Luminarie: Zero G 2200-6000K 24VGraze (2200K+6500 12w)

Lamp Category: Filix ZG324HTWGR24

Lamp: Outdoor

Rated lumens: 1180,0 lm

Power: 11,8 W

Average color temperature : 3785 K

Gama 0 color temperature : 3793 K

Min color temperature : 2953 K

Max color temperature : 4431 K

Test Description:

Measure distance: 4,0 m

Lateral pitch: 2,5 °

Vertical pitch: 2,5 °

Lateral scan angle: 360,0 °

Vertical scan angle: 90,0 °

Light sensor: Minolta CL-200A

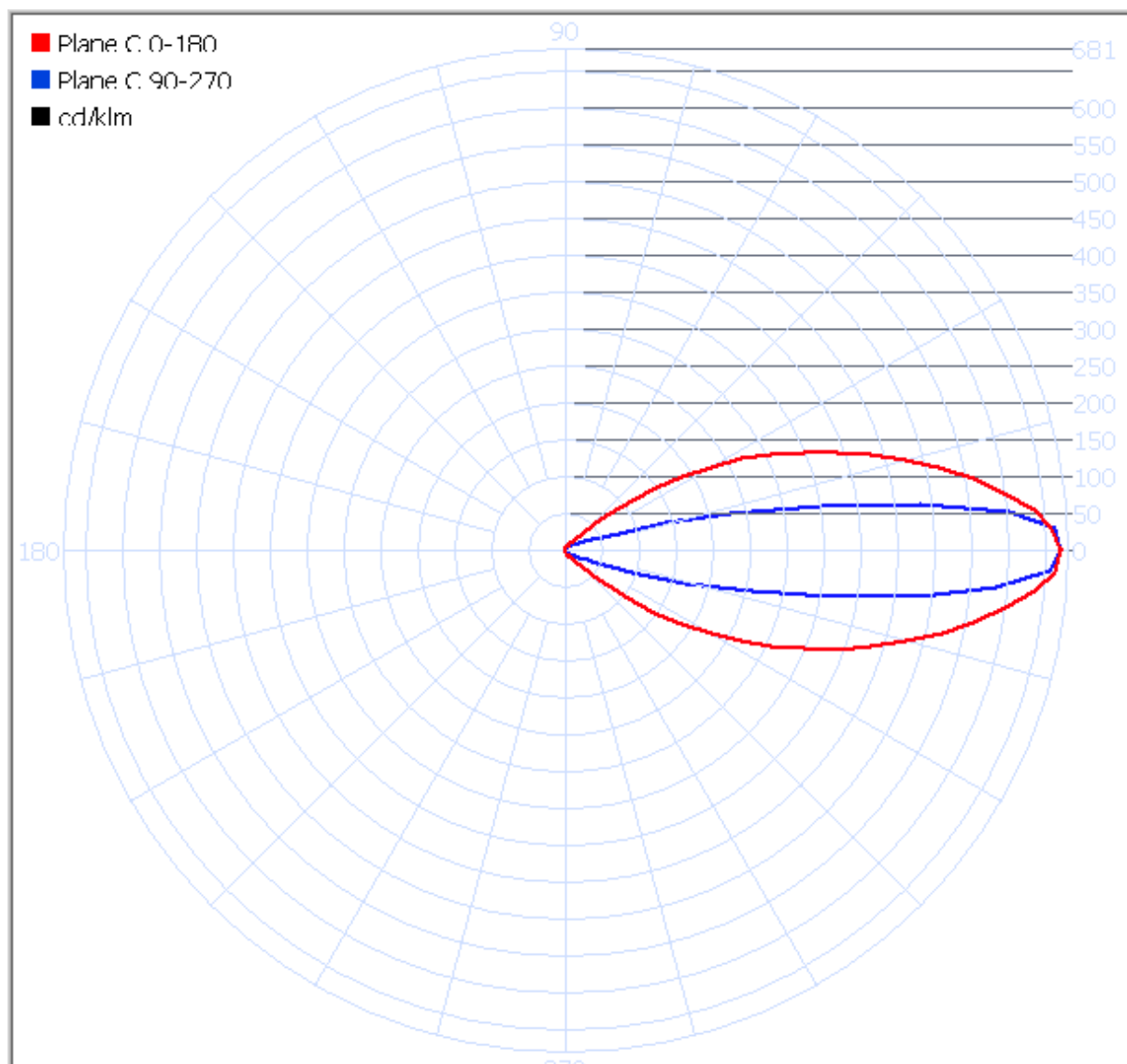
Issue date: 9.11.2018 7:32

Bug Ratings

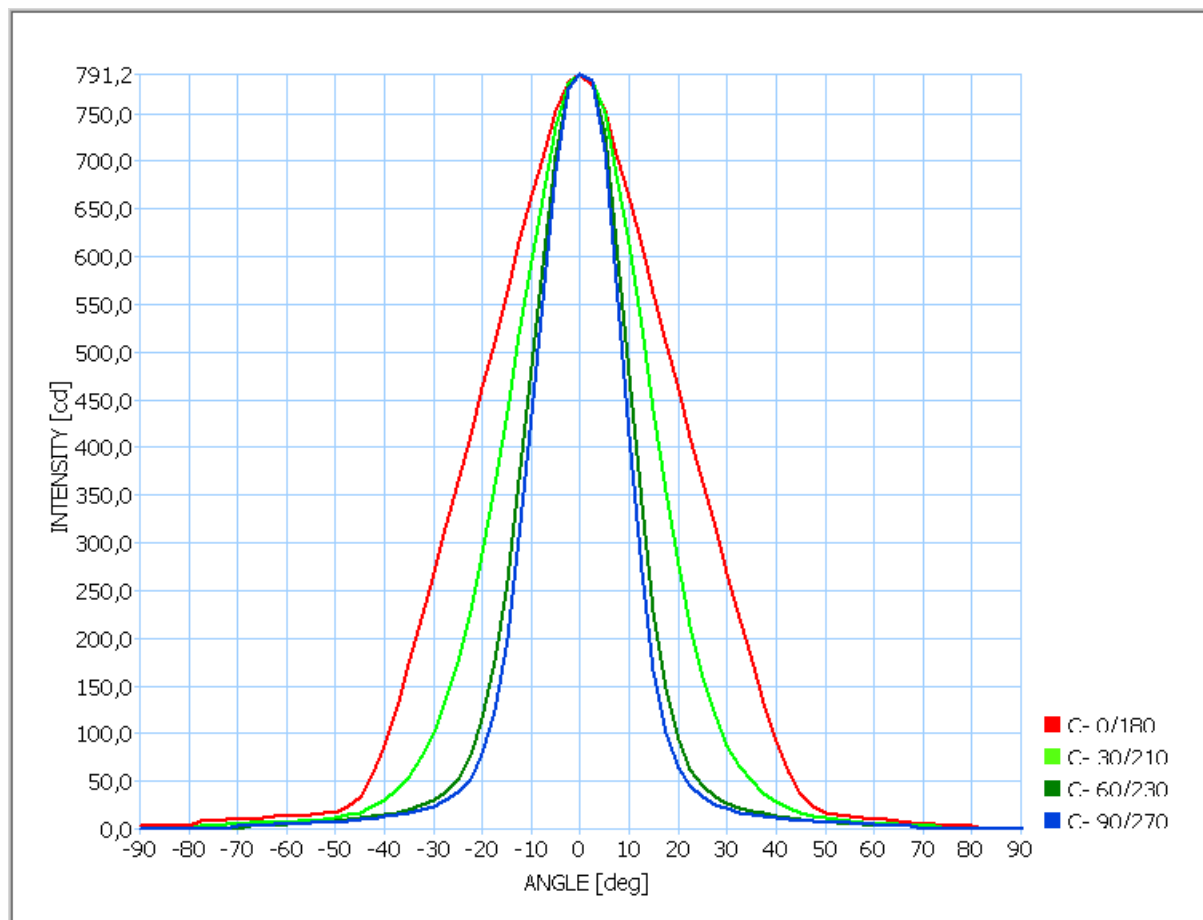
	Lumens	Lumens [%]
Forward Light		
Forward Lumens	141,985	49,778
FL (0°-30°)	111,563	39,113
FM (30°-60°)	27,825	9,755
FH (60°-80°)	2,579	0,904
FVH (80°-90°)	0,018	0,006
Back Light		
Back Lumens	143,251	50,222
BL (0°-30°)	111,399	39,055
BM (30°-60°)	27,570	9,666
BH (60°-80°)	3,991	1,399
BVH (80°-90°)	0,290	0,102
Up Light		
Up Lumens	0,000	0,000
UL (90°-100°)	0,000	0,000
UH (100°-180°)	0,000	0,000
Total Lumens	285,235	100,000

Back Light	Up Light	Glare
B1	U0	G0

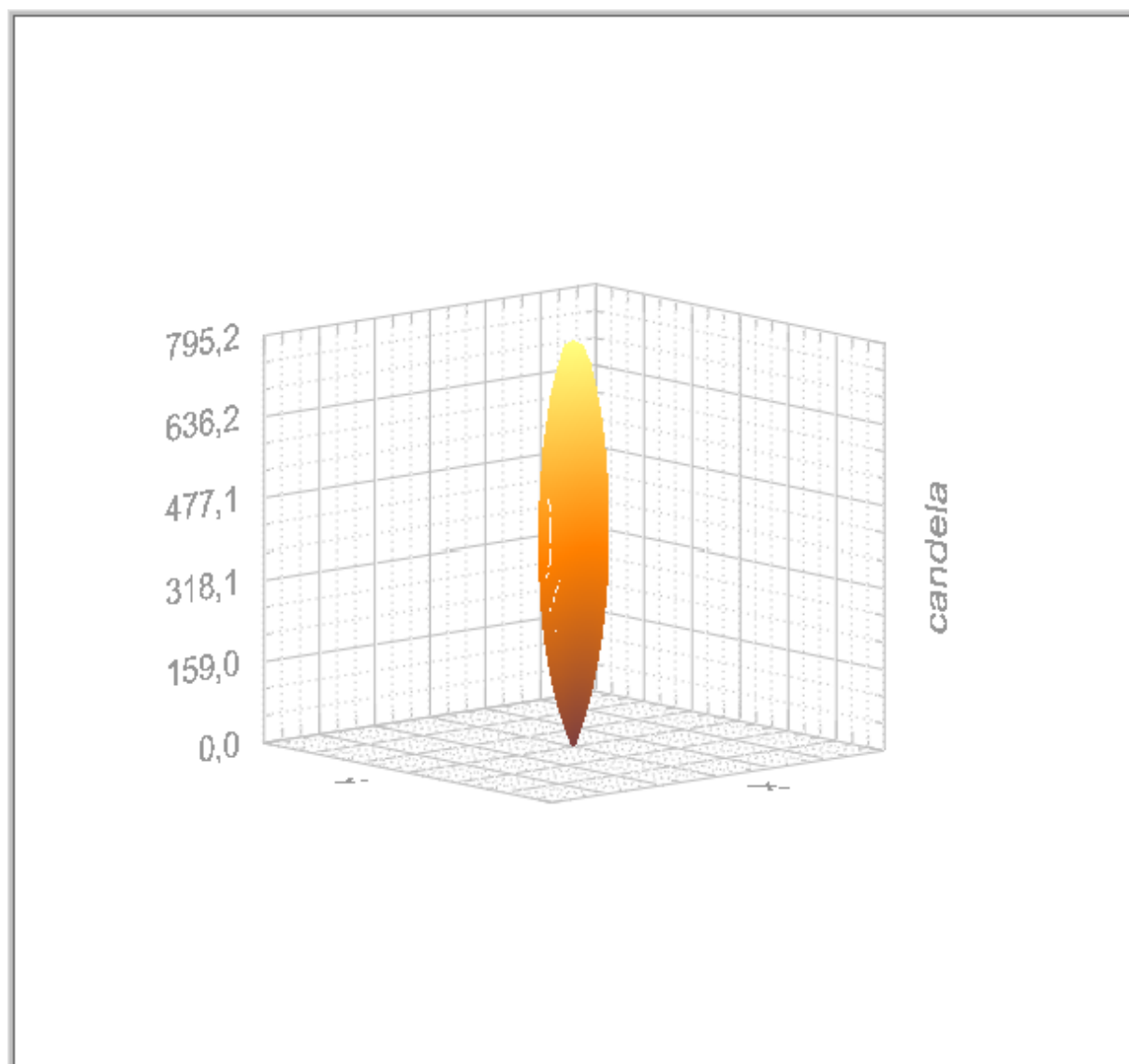
POLAR LIGHT DISTRIBUTION

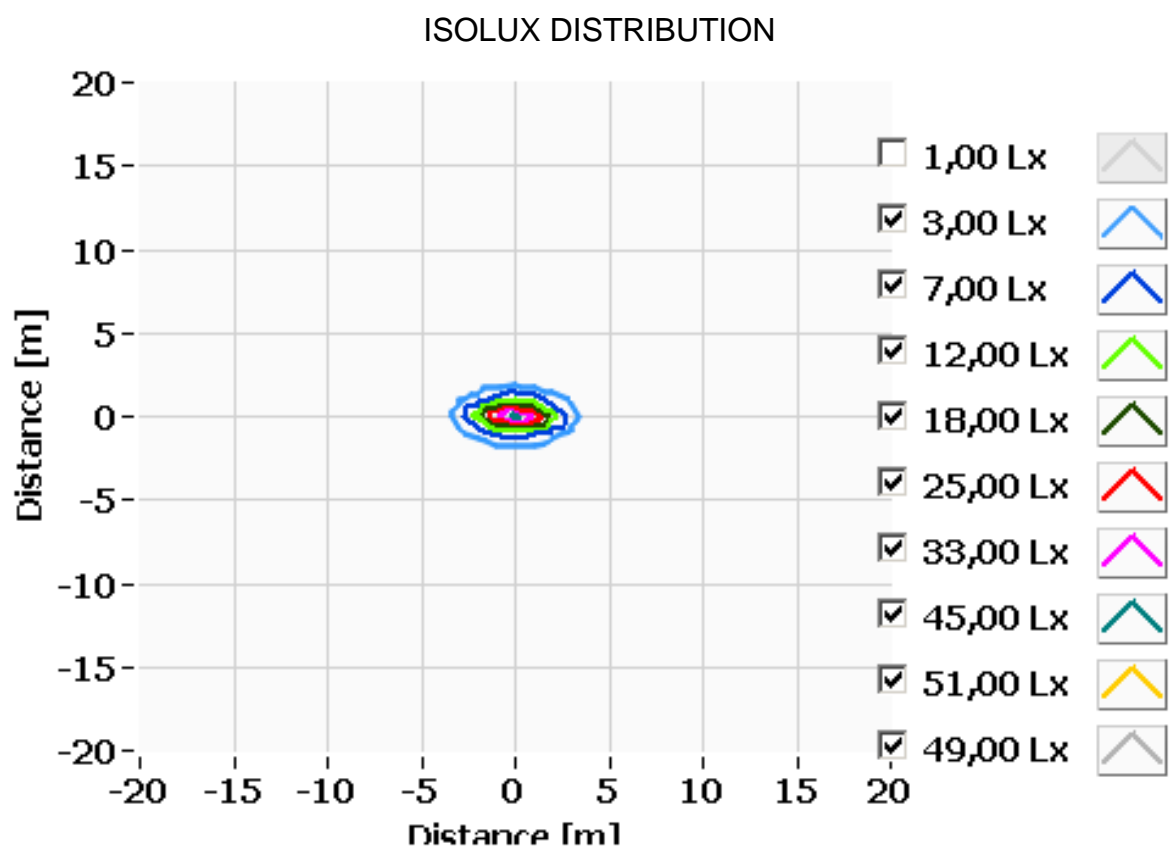


CARTESIAN LIGHT DISTRIBUTION

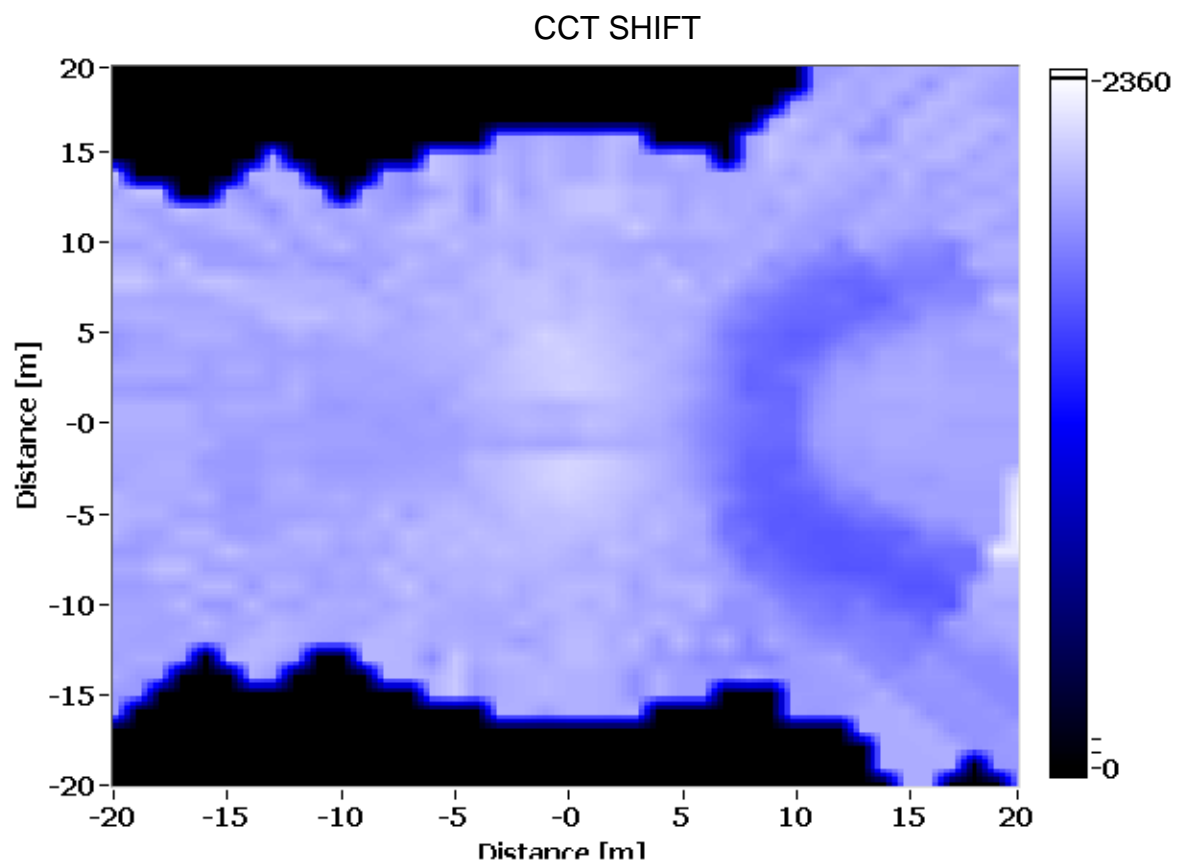


3D LIGHT DISTRIBUTION





Lamp height: 4,00 m



Lamp height: 4,00 m

Average color temperature : 3785 K
Gama 0 color temperature : 3793 K
Min color temperature : 2953 K
Max color temperature : 4431 K